

Rittal – The System.

Faster – better – everywhere.

Digital Brochure

ENCLOSURES

POWER DISTRIBUTION

CLIMATE CONTROL

IT INFRASTRUCTURE

SOFTWARE & SERVICES

FRIEDHELM LOH GROUP

www.rittal.ca



Rittal – The System.

Faster – better – everywhere.



RiLine

Busbar systems 3-pole and DC

Holder + busbars + contact hazard protection

- Flat copper busbar system, see page 198
- PLS busbar system, see page 200
- Accessories, see page 217

Connection systems 3-pole

- Connection adapters, see page 202
- Terminals, see page 223
- Connection block, see page 224
- Accessories, see page 223

Component adapters 3-pole

- OM adapters, see page 204
- Circuit-breaker component adapters, see page 208
- Accessories, see page 225

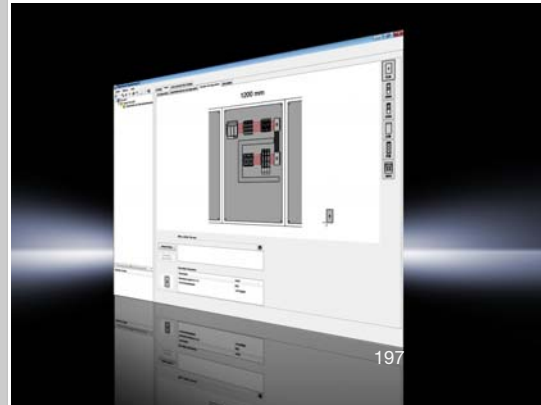
Fuse elements 3-pole

- NH fuse-switch disconnectors, see page 213
- Fuse holders, see page 215
- Accessories, see page 228

Rittal Power Engineering with update function

Model No. 3020.500,
see page 231

- Configuration of RiLine busbar systems
- Simple component selection, integrated switchgear database
- Automatic calculation of rated currents and power dissipation



Busbar supports/post isolators

Busbar supports

1- and 2-pole

Material:

- Polyamide (PA 6.6)
- Fire behavior corresponding to UL 94-V0

Color:

- RAL 7035

Supply includes:

9342.030

- Elevation for stepped arrangement of PLS busbars

Note:

9340.030/9342.030

- The busbar supports can be bayed with a 60 mm busbar center distance when assembling multi-pole systems

Technical details:

Available on the Internet

Version	Packs of	1	2	2	Page
Number of poles		1-pole	1-pole	2-pole	
Busbar center distance mm		–	–	60	
For E-Cu busbars		PLS 1600	–	–	219
		–	12 x 5/10 ¹⁾ , 15 x 5 – 30 x 10 mm	12 x 5 – 30 x 10 mm	218
Rated operating voltage V, ~		1000, 1~	1000, 1~	1000, 2~	
		1500 (DC)	1500 (DC)	–	
PEN/N/PE supports		■	■	■	
N/PE supports		–	–	■	
Approvals		UL	UL	UL	
Model No.	4 pc(s).	9342.030	9340.030	9340.040	
Accessories					
Spacers	12 pc(s).	–	9340.090	–	217
Captive nuts M5 ²⁾	50 pc(s).	–	4166.000	4166.000	538

¹⁾ When using 12 x 5/10 mm busbars, spacer 9340.090 is required

²⁾ To attach the busbar supports to the TS frame profile and system chassis with rectangular 12.5 x 10.5 mm system punching

Post isolators

For configuring busbar systems with any given bar center distances and for assembling insulated PE or PEN busbars.

Material:

- Duroplastic polyester (UP resin)

Technical details:

Available on the Internet

Rated operating voltage kV	1	1
Tensile strength kN	12	13
Torsional strength Nm	75	90
Bending strength kN	6	6
Height mm	40	50
Thread	M10	M10
Packs of	6 pc(s).	6 pc(s).
Model No.	3031.000	3032.000

Spacers

for RiLine busbar supports (flat bar system)

For adapting 12 x 5 and 12 x 10 mm size busbars.

For busbar supports

- 9340.030 (1-pole), see page 217
- 9340.000/.010 (3-pole), see page 198

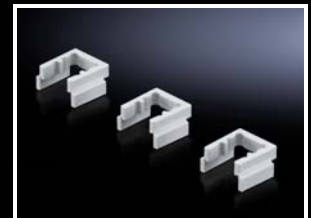
Material:

- Polyamide (PA 6.6)
- Fire behavior corresponding to UL 94-V0

Color:

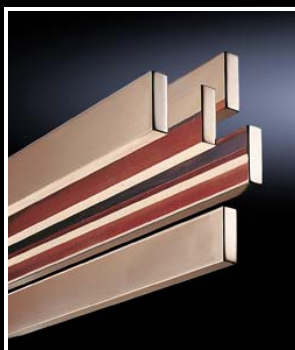
- RAL 7035

Packs of	Model No.
12 pc(s).	9340.090



RiLine Accessories

Busbars



Busbars CUPONAL

To DIN EN 13 601

Length: 94 inches (2400 mm)/bar

Copper-coated aluminum busbars, suitable for configuring busbar systems with busbar supports 9340.000/9340.050, see page 198.

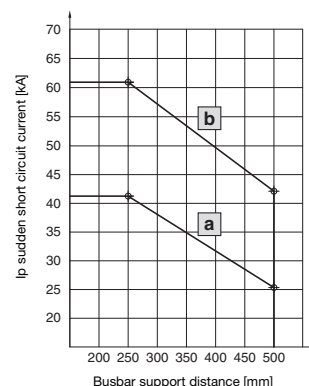
Material:

- Aluminum core with crimped copper coating made of E-Cu

Dimensions mm	Rated current ¹⁾ A	Packs of	Model No.
20 x 5	235	6 pc(s).	3582.020
20 x 10	363	3 pc(s).	3585.020
30 x 5	328	6 pc(s).	3584.020
30 x 10	493	3 pc(s).	3586.020

¹⁾ Current carrying capacity at 149°F bar temperature and 95°F ambient temperature, correction factor diagram to DIN 43 671

Short circuit strength diagram



Busbars CUPONAL mm	Busbar supports	Characteristic
20 x 5/10	9340.000/.050	a
30 x 5/10	9340.000/.050	b

Busbars E-Cu

To DIN EN 13 601

Length: 94 inches (2400 mm)/bar

Material:

E-Cu F30

Technical details:

Available on the Internet

Dimensions mm	Approvals	Packs of	Model No.	Page
12 x 5	UL	6 pc(s).	3580.000	
15 x 5	UL	6 pc(s).	3581.000	
20 x 5	UL	6 pc(s).	3582.000	
25 x 5	UL	6 pc(s).	3583.000	
30 x 5	UL	6 pc(s).	3584.000	
12 x 10	UL	6 pc(s).	3580.100	
15 x 10	UL	6 pc(s).	3581.100	
20 x 10	UL	3 pc(s).	3585.005	
30 x 10	UL	3 pc(s).	3586.005	

Accessories

Accessories	Dimensions mm	Packs of	Model No.	Page
Busbar connector mm	12 x 5 – 15 x 10 (single connection)	3 pc(s).	9350.075	220
	20 x 5 – 30 x 10 (single connection)	3 pc(s).	9320.020	220
	20 x 5 – 30 x 10 (baying connection)	3 pc(s).	9320.030	220
Busbar cover sections mm	12/15 x 5	4 pc(s).	9350.010	219
	12/15 x 10	4 pc(s).	9350.060	219
	12 x 5 – 30 x 10	10 pc(s).	3092.000	219

Busbar cover sections

Contact hazard protection through encapsulation of busbars. May be cut to length as required.

Length: 39 inches (1000 mm)/section

Material:

- Thermally modified hard PVC
- Fire behavior corresponding to UL 94-V0

Color:

- RAL 7035

Note:

- Contact hazard protection, additional solutions, see page 222

Technical details:

Available on the Internet

For busbars mm	Approvals	Packs of	Model No.
12/15 x 5	–	4 pc(s).	9350.010
12/15 x 10	–	4 pc(s).	9350.060
12 x 5 – 30 x 10	UL	10 pc(s).	3092.000

PLS special busbars E-Cu

Technical details:

Available on the Internet

For PLS 800 system, bar thickness 5 mm, bar cross-section 300 mm²

For enclosure width inches (mm)	Length inches (mm)	Approvals	Packs of	Model No.	Page
24 (600)	19 (495)	UL	3 pc(s).	3524.000	
32 (800)	27 (695)	UL	3 pc(s).	3525.000	
39 (1000)	35 (895)	UL	3 pc(s).	3525.010	
47 (1200)	43 (1095)	UL	3 pc(s).	3526.000	
Variable	94 (2400)	UL	1 pc(s).	3509.000	

Accessories

PLS busbar connectors (single connection)	3 pc(s).	3504.000	220
PLS busbar connectors (baying connection)	3 pc(s).	3505.000	220
PLS expansion connectors	3 pc(s).	9320.060	220

For PLS 1600 system, bar thickness 10 mm, bar cross-section 900 mm²

For enclosure width inches (mm)	Length inches (mm)	Approvals	Packs of	Model No.	Page
24 (600)	19 (495)	UL	3 pc(s).	3527.000	
32 (800)	27 (695)	UL	3 pc(s).	3528.000	
39 (1000)	35 (895)	UL	3 pc(s).	3528.010	
47 (1200)	43 (1095)	UL	3 pc(s).	3529.000	
Variable	94 (2400)	UL	1 pc(s).	3516.000	

Accessories

PLS busbar connectors (single connection)	3 pc(s).	3514.000	220
PLS busbar connectors (baying connection)	3 pc(s).	3515.000	220
PLS expansion connectors	3 pc(s).	9320.070	220



RiLine Accessories

Busbars



Busbar connector

For connecting square busbars, no drilling required.

Material:

9350.075

- Top piece: St 37, nickel-plated surface finish
- Contact plate: E-Cu, nickel-plated surface finish

9320.020/9320.030

- Top piece: Carbon steel, zinc-plated, passivated
- Contact plate: E-Cu, silver-plated

Technical details:

Available on the Internet

For busbars mm	Application		Approvals	Packs of	Model No.
	Single connection	Baying connection ¹⁾			
12 x 5 – 15 x 10	■	–	UL	3 pc(s).	9350.075
20 x 5 – 30 x 10	■	–	UL	3 pc(s).	9320.020
	–	■	UL	3 pc(s).	9320.030

¹⁾ Connection from enclosure to enclosure

PLS busbar connectors

For connecting the special PLS busbars. No drilling required.

Material:

- E-Cu

Surface finish:

- Nickel-plated

Technical details:

Available on the Internet

Application	For system	Approvals	Packs of	Model No.
Single connection	PLS 800	UL	3 pc(s).	3504.000
	PLS 1600	UL	3 pc(s).	3514.000
Baying connection ¹⁾	PLS 800	UL	3 pc(s).	3505.000
	PLS 1600	UL	3 pc(s).	3515.000

¹⁾ Connection from enclosure to enclosure

PLS expansion connectors

For thermal and mechanical compensation when connecting special PLS busbars from enclosure to enclosure.

Material:

- E-Cu

Note:

- At a temperature increase of 30 K, there is an expansion in the length of the busbars by approximately 0.5 mm/m. For this reason, it is advisable to use an expansion connector for thermal compensation in busbar systems with busbar sections > 3600 mm.

Technical details:

Available on the Internet

Expansion connector	For system	Approvals	Packs of	Model No.	Page
	PLS 800	UL	3 pc(s).	9320.060	
	PLS 1600	UL	3 pc(s).	9320.070	

Also required

PLS busbar connectors ¹⁾	For system	Approvals	Packs of	Model No.	Page
	PLS 800	UL	3 pc(s).	3504.000	220
	PLS 1600	UL	3 pc(s).	3514.000	220

¹⁾ Two busbar connectors are needed to fit one expansion connector

Laminated copper bars

Length: 79 inches (2000 mm)/bar

Material:

Cu membranes

- High-purity electrolyte copper F20

Insulation

- High-strength vinyl compound
- Expansion 370%
- Temperature range: -22°F...+221°F
- Fire behavior corresponding to UL 94-V0
- Dielectric strength: 20 kV/mm

Technical details:

Available on the Internet

Assembly ¹⁾ mm	I _n at 70 K ²⁾ A	I _n at 50 K ²⁾ A	I _n at 30 K ²⁾ A	Approvals	Packs of	Model No.
6 x 9 x 0.8	285	240	180	UL	1 pc(s).	3565.005
6 x 15.5 x 0.8	415	350	265	UL	1 pc(s).	3568.005
10 x 15.5 x 0.8	575	480	365	UL	1 pc(s).	3569.005
5 x 20 x 1	525	435	330	UL	1 pc(s).	3570.005
5 x 24 x 1	605	510	385	UL	1 pc(s).	3571.005
10 x 24 x 1	920	770	585	UL	1 pc(s).	3572.005
5 x 32 x 1	770	645	485	UL	1 pc(s).	3573.005
10 x 32 x 1	1155	965	730	UL	1 pc(s).	3574.005
5 x 40 x 1	930	780	590	UL	1 pc(s).	3575.005
10 x 40 x 1	1370	1145	865	UL	1 pc(s).	3576.005
5 x 50 x 1	1125	940	710	UL	1 pc(s).	3577.005
10 x 50 x 1	1635	1365	1030	UL	1 pc(s).	3578.005
10 x 63 x 1	1950	1610	1230	UL	1 pc(s).	3579.005

¹⁾ Number of membranes x membrane width x membrane thickness

²⁾ The sum of the ambient temperature and temperature increase is used to determine the resulting conductor temperature of the laminated copper bars

Example:

3565.005 at 180 A, i.e. the temperature increases by 30 K. An ambient temperature of 95°F results in a conductor temperature of 95°F + 30 K = 149°F

Universal supports

For the attachment of laminated copper bars from 5 x 20 x 1 to 10 x 63 x 1 mm.

Material:

- Fiberglass-reinforced, thermoplastic polyester (PBT)
- Fire behavior corresponding to UL 94-V0

Color:

- RAL 7035

Supply includes:

- Screws and U nuts to attach to PS punched rails

Approvals	Packs of	Model No.
UL	3 pc(s).	3079.000



Accessories:

- PS punched rails, see page 526

Technical details:

Available on the Internet

Universal supports

For the attachment of multi-stacked laminated copper bars from 5 x 40 x 1 to 10 x 100 x 1 mm.

Material:

- Fiberglass-reinforced, thermoplastic polyester (PBT)
- Fire behavior corresponding to UL 94-V0

Color:

- RAL 7035

Supply includes:

- Screws and sliding nuts to attach to C rails

Packs of	Model No.
3 set(s)	3079.010

Note:

- The 3 sets of universal supports match the scope of supply shown in the photo



Accessories:

- C rails 30/15, see page 528



RiLine Accessories

Contact hazard protection



System components

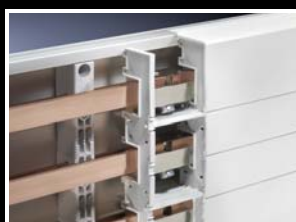
Material:
 – Thermally modified hard PVC
 – Fire behavior corresponding to UL 94-V0

Color:
 – RAL 7035

Technical details:
 Available on the Internet

For RiLine busbar system			3-pole		
			Flat busbars	PLS 800	PLS 1600
1 Base trays					
Length (L) inches (mm)	Packs of	Approvals	Model No.		
20 (500)	2 pc(s).	UL	9340.100	9341.100	9342.100
28 (700)	2 pc(s).	UL	9340.110	9341.110	9342.110
35 (900)	2 pc(s).	UL	9340.120	9341.120	9342.120
43 (1100)	2 pc(s).	UL	9340.130	9341.130	9342.130
94 (2400)	1 pc(s).	UL	9340.170	9341.170	9342.170
1 Base tray infills					
4 (100)	2 pc(s).	UL	9340.140	9341.140	9342.140
2 Cover sections					
28 (700)	2 pc(s).	UL	9340.200	9340.200	9340.200
43 (1100)	2 pc(s).	UL	9340.210	9340.210	9340.210

1 Base tray	1 Base tray infill	2 Cover section
For rear contact hazard protection of the flat busbar assembly.	For rear contact hazard protection when connecting the busbars from enclosure to enclosure. Supply includes: Assembly components	May be cut to desired width; for clip-on mounting to the base tray. Note: If a load will be applied to the cover section from the front, the support panel is required to provide stabilization.



Support panels

for cover section
 To prevent side access to the cover section. The support panel also provides additional stability.

Recommended mounting distance: ≤ 500 mm

Material:
 – Polyamide (PA 6.6)
 – Fire behavior corresponding to UL 94-V0

Color:
 – RAL 7035

For system assembly	Approvals	Packs of	Model No.
3-pole	UL	5 pc(s).	9340.220

Technical details:
 Available on the Internet



Cross members

for RiLine busbar connections, 3-pole
 To comply with the clearances required for "feeder circuits" under UL 508. For flat bar systems with 60 mm bar center distance and PLS 800/1600.

Material:
 – Polyamide (PA 6.6)
 – Fire behavior corresponding to UL 94-V0

Color:
 – RAL 7035

Note:
 – For a busbar connection two cross members are required

Length inches (mm)	Approvals	Packs of	Model No.
6.3 (160)	UL	2 pc(s).	9340.230

! Also required:
 – Support panel 9340.220, see page 222

Technical details:
 Available on the Internet

Conductor terminals

Material:

3450.500 – 3459.500

– Carbon steel, zinc-plated, passivated

3550.000/3555.000

– Brass



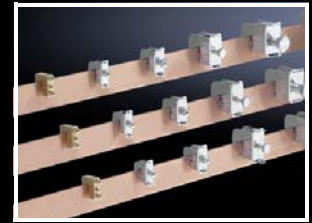
Accessories:

– Laminated copper bars, see page 221

Technical details:

Available on the Internet

For busbar thickness mm	Connection of round conductors		Clamping area for laminated copper bars, H x W mm	Approvals	Packs of	Model No.
	mm ²	AWG – MCM				Model No.
3 – 5	1 – 4	17 – 12	–		15 pc(s).	3550.000
5	1 – 4	17 – 12	–		15 pc(s).	3450.500
5	2.5 – 16	14 – 6	8 x 8		15 pc(s).	3451.500
5	16 – 50	6 – 0	11 x 10.5		15 pc(s).	3452.500
5	35 – 70	2 – 2/0	15 x 16.5		15 pc(s).	3453.500
5	70 – 185	2/0 – 350	20 x 22.5		15 pc(s).	3454.500
6 – 10	1 – 4	17 – 12	–		15 pc(s).	3555.000
10	1 – 4	17 – 12	–		15 pc(s).	3455.500
10	2.5 – 16	14 – 6	8 x 8		15 pc(s).	3456.500
10	16 – 50	6 – 0	11 x 10.5		15 pc(s).	3457.500
10	35 – 70	2 – 2/0	15 x 16.5		15 pc(s).	3458.500
10	70 – 185	2/0 – 350	20 x 22.5		15 pc(s).	3459.500



System covers

For conductor terminals and plate clamps.

Material:

– ABS

– Fire behavior corresponding to UL 94-V0

Color:

– RAL 7035

Note:

- For 3-pole systems with 60/100 mm bar center distance
- Only suitable for use with systems without a base tray
- For systems with a base tray, the system covers must be mechanically shortened

Technical details:

Available on the Internet

Width mm	Depth mm	Height mm		Approvals	Packs of	Model No.
		When fitted to busbar systems				
		60 mm	100 mm			
50	80	230	325		4 pc(s).	3086.000
100	80	230	325		4 pc(s).	3087.000
100	110	230	325		4 pc(s).	3090.000
200	80	230	325		4 pc(s).	3088.000
200	110	230	325		4 pc(s).	3091.000



Connection systems



Connection block

For the connection of round conductors and laminated copper bars.
For busbars 12 x 5 – 30 x 10 mm.

Material:

Chassis

- Polyamide (PA 6.6)
- Fire behavior corresponding to UL 94-V0

Cover

- ABS
- Fire behavior corresponding to UL 94-V0

Color:

- RAL 7035

Supply includes:

- Three terminals including cover

Note:

- When using the terminal on 2-pole busbar systems, the terminal must be rotated through 180° for connection to the PE busbar

Technical details:

Available on the Internet

Rated current max. A		Packs of	800	1600	Page
Rated operating voltage V, ~			690, 1~	690, 1~	
Rated operating voltage (L1 + L2) V			1000 (DC)	1000 (DC)	
Rated operating voltage (L1 + L3) V			1500 (DC)	1500 (DC)	
Cable outlet			Top/bottom	Top/bottom	
Connection of round conductors, fine wire with wire end ferrule	mm ²		95 – 185	–	
Connection of round conductors, multi-wire	mm ²		90 – 300	–	
	AWG – MCM		3/0 – 600		
Clamping area for laminated copper bars (for 5 mm bar thickness), H x W mm			26 x 33	27 x 65	
Clamping area for laminated copper bars (for 10 mm bar thickness), H x W mm			21 x 33	22 x 65	
Height mm			88	88	
Width mm			50	85	
Approvals			UL	UL	
Model No.		3 pc(s).	9342.311	9342.321	
Accessories					
Laminated copper bars			■	■	221

RiLine Accessories

for OM adapters/supports

Support rails 35 x 10 mm

for OM adapters/supports

For attaching to the adapter section and support frame.

Material:

- Polyamide (PA 6.6)

Color:

- RAL 9005

Supply includes:

- Assembly screws

Note:

- UL approval in conjunction with OM adapter/support

Version	Width mm	With anti-slip guard ¹⁾	Packs of	Model No.
TS 45C	45	■	5 pc(s).	9342.850
TS 45D	45	–	5 pc(s).	9342.860
TS 45D-V ²⁾	45	–	5 pc(s).	9342.870
TS 55C	55	■	5 pc(s).	9342.920
TS 55D	55	–	5 pc(s).	9342.930
TS 55D-V ²⁾	55	–	5 pc(s).	9342.940

¹⁾ Anti-slip guard for motor circuit-breaker

²⁾ Support rail only suitable for non hole-pattern dependent mounting on support frame



Support rails 35 x 15 mm

for OM adapters/supports

For attaching to the adapter section.

Material:

- Carbon steel

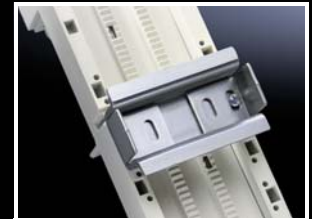
Surface finish:

- Zinc-plated

Supply includes:

- Assembly screws and side anti-slip guard

Width mm	Packs of	Model No.
45	5 pc(s).	9342.880
55	5 pc(s).	9342.950



Support rails 35 x 7.5 mm

for OM adapters/supports

For assembly on 55 mm wide OM adapters/supports with 10 mm wide insert strips mounted on the right and left.

Arrangement of the mounting hole for central configuration on 55 mm wide adapter section or support frame.

Material:

- Carbon steel

Surface finish:

- Zinc-plated

Supply includes:

- Assembly screws and side anti-slip guard

Width mm	Packs of	Model No.
72	5 pc(s).	9342.980



Insert strips

for OM adapters/supports

To extend the construction width in a 10 mm hole pattern. May be bayed as often as required on both sides. With integral cable duct.

Material:

- Polyamide (PA 6.6)

Color:

- RAL 7035

Supply includes:

- 6 connection pins

Width mm	Approvals	Packs of	Model No.
10	UL	2 pc(s).	9340.290



RiLine Accessories

for OM adapters/supports



Connection pin

For any required mechanical connection of OM adapter/support and insert strip 9340.290.

Material:

- Polyamide (PA 6)

Color:

- RAL 5010

Approvals	Packs of	Model No.
UL	20 pc(s).	9340.280



Pin Block

for support frames

For secure attachment and positioning of the contactor on motor starter combinations. For simple clip-on mounting onto the support frame. Individual vertical positioning is achieved by relocating the Pin Block.

Material:

- Polyamide (PA 6.6)

Color:

- RAL 9005

For support frame width mm	Packs of	Model No.
45	5 pc(s).	9342.800
55	5 pc(s).	9342.810

Note:

- UL approval in conjunction with OM adapter/support



Accessories:

- Pin Block Plus, see page 226



Pin Block Plus

for starters with increased contactor attachment

Mounted by simply clipping onto the Pin Block 9342.800/.810.

Material:

- Polyamide (PA 6.6)

Color:

- RAL 9005

Packs of	Model No.
5 pc(s).	9342.820

Note:

- UL approval in conjunction with OM adapter/support



Cable set

Pre-assembled connection cables for individual connection of switchgear, top-mounted on OM adapters with tension spring clamps, or suitable for wiring between individual switchgear.

Length: 130 mm

Material:

- PVC insulation
- Temperature resistant to 221°F
- Wire ends with ultrasonic wire-end compression at both ends

Technical details:

Available on the Internet

Version	Packs of	Model No.
AWG 14 = 2.08 mm ² ± 2.5 mm ²	15 pc(s).	9340.850
AWG 12 = 3.31 mm ² ± 4 mm ²	15 pc(s).	9340.860
AWG 10 = 5.26 mm ² ± 6 mm ²	15 pc(s).	9340.870
AWG 8 = 8.37 mm ² ± 10 mm ²	6 pc(s).	9340.880
AWG 6 = 13.3 mm ² ± 16 mm ²	6 pc(s).	9340.890

AWG = American Wire Gauges

for circuit-breaker component adapters

Insert strips

for circuit-breaker component adapters

To extend the construction width from 140 mm to 190 mm.

Material:

– ABS

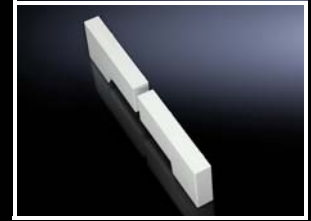
Color:

– RAL 7035

Suitable for Model No.	Width mm	Approvals	Packs of	Model No.
9345.700/.710 9345.720/.730	25	UL	4 pc(s).	9342.720

Note:

– Four pieces are required to extend a component adapter



Sliding blocks

for circuit-breaker component adapters

For additional locking of circuit-breakers with more than two attachment points.

Color:

– RAL 7035

Note:

– UL approval in conjunction with circuit-breaker component adapter

Suitable for Model No.	With threaded insert	Packs of	Model No.
9342.540/.550	M3/M4	6 pc(s).	9342.560
9345.600/.610	M4/M5	6 pc(s).	9342.640



Connection bracket

for circuit-breaker component adapters

Pre-assembled, laminated flat copper for connecting standard, commercially available circuit-breakers (MCCB).

Material:

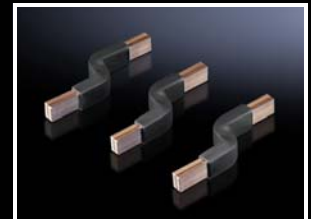
– Electrolytic copper F20

Insulation:

- Vinyl compound
- Temperature resistant to 221°F
- Fire behavior corresponding to UL 94-V0

Technical details:

Available on the Internet



Suitable for Model No.	Dimensions ¹⁾ mm	To connect circuit-breakers (MCCB), Make (model)	Packs of	Model No.
9342.540/.550	6 x 9 x 0.8	ABB (T1, T1 UL, T2, T2 UL), Eaton (NZM1, NZM1 UL, BZM B1), OEZ (BC160N), Schneider Electric (NSC100, NSE75, NSE100) Siemens (3RV13 53, 3VT 1)	3 pc(s).	9342.570²⁾

¹⁾ Number of membranes x membrane width x membrane thickness

²⁾ Universal application for switchgear with a dimensional difference between the mounting level and the upper edge of the contact level of 20 ± 5 mm

Support rails 35 x 15 mm

for circuit-breaker component adapters

Material:

– Carbon steel

Surface finish:

– Zinc-plated

Supply includes:

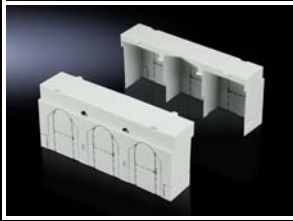
– Assembly screws and side anti-slip guard

Suitable for Model No.	Width mm	Approvals	Packs of	Model No.
9342.400 9342.410	72	UL	5 pc(s).	9320.120



RiLine Accessories

for NH fuse-switch/NH in-line fuse-switch disconnectors



Connection compartment covers

for NH disconnectors

For extending the contact hazard protection cover, e.g. when using cable lugs with a long collar. Bayable as required at the top and bottom.

Material:

– Polyamide (PA 6)

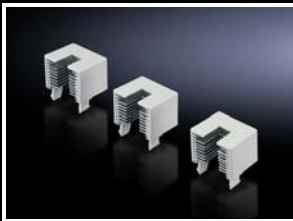
Color:

– RAL 7035

Suitable for NH disconnectors	Packs of	Model No.
Size 00	2 pc(s).	9344.520
Size 1	2 pc(s).	9344.530
Size 2	2 pc(s).	9344.540
Size 3	2 pc(s).	9344.550

Technical details:

Available on the Internet



Arcing chambers

for NH disconnectors, sizes 1 to 3

To increase switching capacity (utilization category).

Technical details:

Available on the Internet

Packs of	Model No.
3 pc(s).	9344.680



Micro-switch

for NH disconnectors/NH in-line fuse-switch disconnectors

To indicate the switch position of the NH unit (switch cover).

Suitable for NH disconnectors	Packs of	Model No.
Size 000/00	5 pc(s).	3071.000
Size 1/2/3	2 pc(s).	9344.510¹⁾

¹⁾ Incl. plastic lug for attaching the micro-switch to the disconnector chassis